



● Laser Machine Spare Parts

激光设备配件

@201707

激光智能制造解决方案专家

上海嘉强自动化技术有限公司成立于2009年，是激光制造行业的高新技术企业。我们拥有智能激光加工头、智能软件、智能硬件、激光制造综合解决方案等产品线，坚持自主创新，共获得专利60余项，可以提供专业的一站式激光制造应用解决方案，包括激光切割、焊接、熔覆、打标等。我们立志将激光应用融合进各行各业，是智能激光制造解决方案的引领者。

我们的愿景：**激光成就智造**

我们的产品可以做什么。。。。



三维切割



平面切割



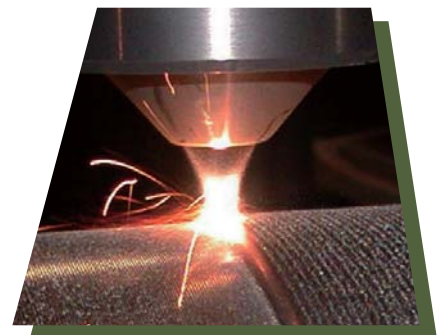
精密加工



三维非金属切割



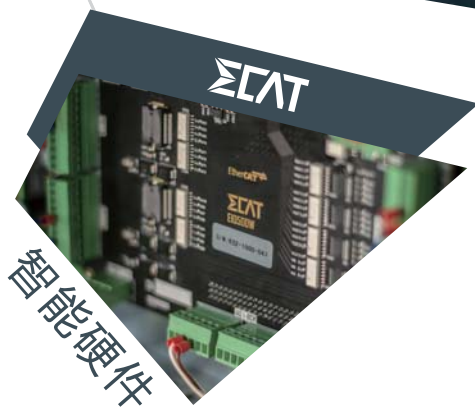
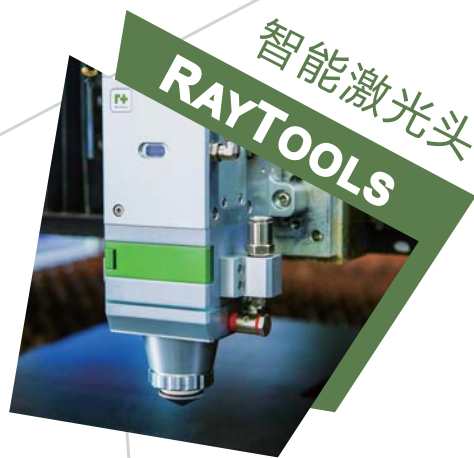
扫描焊接

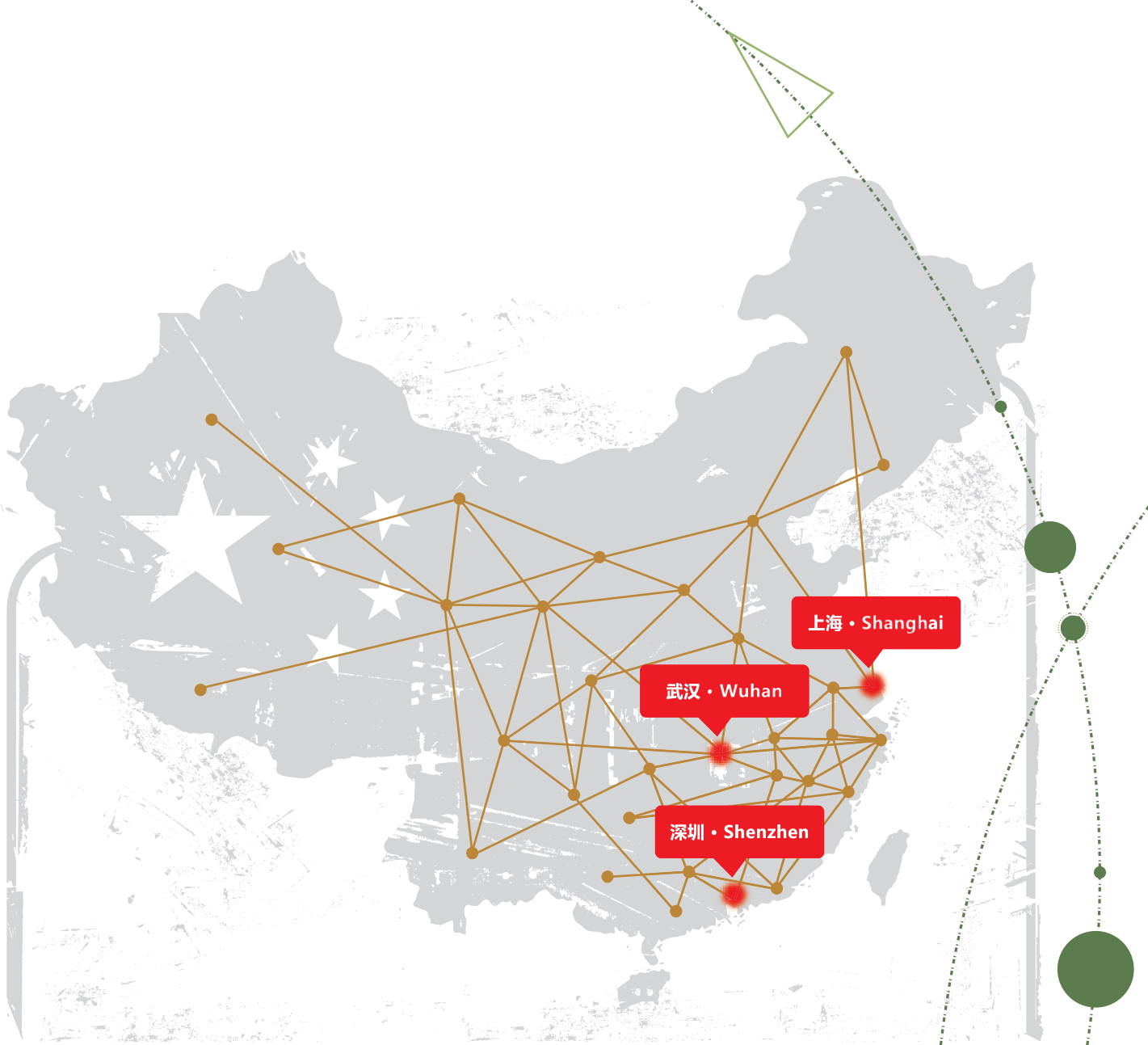


熔覆



EMPOWER 拥有三大业务品牌





ShangHai

上海总部

上海嘉强自动化技术有限公司

Shanghai Empower Technologies Co.Ltd

Hotline: 400-670-1510

Add: 上海市松江区新飞路1500弄72号

Email: sales@empower.cn

业务范围广

小到喷嘴、镜片等零部件，大到整体激光综合加工方案，品类多达5000多种，可满足各种激光应用解决需求。

客户规模大

拥有近2000多家客户，其中国内覆盖全国30个省市，国际拥有俄罗斯、韩国、印度、澳大利亚、阿根廷、乌克兰、波兰、南非等100多家客户。

技术实力强

截止2017年6月，累计获得专利60余项，其中：

授权发明专利6项

授权实用新型专利29项

授权外观设计专利12项

计算机软件著作权登记12项

服务质量好

拥有武汉售后服务中心，深圳子公司，为客户提供更好的品质保证和服务响应度。

服务热线：**400-670-1510**

服务邮箱：**service@empower.cn**

WuHan 武汉

Tel: (027) 8130-2226

Add: 武汉市江夏区谭湖一路8号1栋3单元
(光谷8号工坊二期)

ShenZhen 深圳

Tel: (755) 2690-7510

Add: 深圳市宝安区松岗街道田园路4号B栋

01

镜片



05

Amada



09

Bystronic

11

Hankwang



12

Mazak



14

Mitsubishi



17

Precitec

21

Trumpf

Index

JQ Part#

Reference#

ALT Reference#

详细参数

Amada CO2激光镜片

RT-AM313-0306NM	81140306	6069703	5.0" FL – 1.5" Φ,ZnSe,0.300" ET,UnMounted
RT-AM313-0400NM	81140400	6069789	7.5" FL – 1.5" Φ,ZnSe,0.300" ET,Unmounted
RT-AM313-1072	71501072	o	5.0" FL – 1.5" Φ,ZnSe,0.300" ET,UnMounted
RT-AM313-7070	71501070	o	7.5" FL – 1.5" Φ,ZnSe,0.300" ET,Unmounted
RT-AM313-0307NM	81140307	6021758	5.0" FL – 2.0" Φ,ZnSe,0.380" ET,Unmounted
RT-AM313-0186NM	81140186	6021801	7.5" FL – 2.0" Φ,ZnSe,0.300" ET,Unmounted
RT-AM313-0306NMP5	81140306	o	5.0" FL – 1.5" Φ,ZnSe,0.300" ET,Low Absorption,UnMounted
RT-AM313-0400NMP5	81140400	o	7.5" FL – 1.5" Φ,ZnSe,0.300" ET,Low Absorption,Unmounted
RT-AM313-1072NMP5	71501072	o	5.0" FL – 1.5" Φ,ZnSe,0.300" ET,Low Absorption,UnMounted
RT-AM313-1070NMP5	71501070	o	7.5" FL – 1.5" Φ,ZnSe,0.300" ET,Low Absorption,Unmounted
RT-AM313-0307NMP5	81140307	o	5.0" FL – 2.0" Φ,ZnSe,0.380" ET,Low Absorption,Unmounted
RT-AM313-0186NMP5	81140186	o	7.5" FL – 2.0" Φ,ZnSe,0.300" ET,Low Absorption,Unmounted

Amada 光纤激光镜片

RT-AM313-0238	77100238	o	Φ50.8mm,FL190mm,ET11.4mm
---------------	----------	---	--------------------------

Bystronic CO2激光镜片

RT-BY314-0186	4-00186	o	5.0" FL – 1.5" Φ,ZnSe,0.236" ET,Meniscus
RT-BY314-0187	4-00187	o	7.5" FL – 1.5" Φ,ZnSe,0.236" ET,Meniscus
RT-BY314-5094	4-05094	767963	5.0" FL – 1.5" Φ,ZnSe,0.354" ET,Meniscus
RT-BY314-5095	4-05095	570721	7.5" FL – 1.5" Φ,ZnSe,0.354" ET,Meniscus
RT-BY314-0186MP5	4-00186	o	5.0" FL – 1.5" Φ,ZnSe,0.236" ET,Meniscus,Ultra Low Absorption Lens
RT-BY314-0187MP5	4-00187	o	7.5" FL – 1.5" Φ,ZnSe,0.236" ET,Meniscus,Ultra Low Absorption Lens
RT-BY314-5094MP5	4-05094	123397	5.0" FL – 1.5" Φ,ZnSe,0.354" ET,Meniscus,Ultra Low Absorption Lens
RT-BY314-5095MP5	4-05095	602033	7.5" FL – 1.5" Φ,ZnSe,0.354" ET,Meniscus,Ultra Low Absorption Lens

Hankwang CO2激光镜片

RT-HW405-5270	355270	o	5.0" FL – 2.0" Φ,ZnSe,0.378" ET,Meniscus
RT-HW405-7143	527143	o	7.5" FL – 2.0" Φ,ZnSe,0.378" ET,Meniscus
RT-HW405-4913	114913	o	10" FL – 2.0" Φ,ZnSe,0.378" ET,Meniscus

Mazak CO2激光镜片

RT-MZ315-5160	Z50ZZ005160	o	5.0" FL – 2.0" Φ,ZnSe,0.310" ET
RT-MZ315-0516A	Z50ZZ005160A	o	5.0" FL – 2.0" Φ,ZnSe,0.380" ET
RT-MZ315-0160	Z50MB000160	o	5.0" FL – 1.5" Φ,ZnSe,0.236" ET
RT-MZ315-0160MP5	Z50MB000160	o	5.0" FL – 1.5" Φ,ZnSe,0.236" ET,Low Absorption Black Lens
RT-MZ315-0400	Z50MB000400	o	5.0" FL – 1.5" Φ,ZnSe,0.300" ET
RT-MZ315-0400MP5	Z50MB000400	o	5.0" FL – 1.5" Φ,ZnSe,0.300" ET,Low Absorption Black Lens
RT-MZ315-0520A	Z50ZZ00520A	o	7.5" FL – 2.0" Φ,ZnSe,0.380" ET
RT-MZ315-0520AMP5	Z50ZZ00520A	o	7.5" FL – 2.0" Φ,ZnSe,0.380" ET,Low Absorption Black Lens

JQ Part#

Reference#

ALT Reference#

详细参数

Mitsubishi/大族/团结/楚天/华工/领创 CO2激光镜片

RT-MB312-018	W018	618938	7.5" FL – 1.5" Φ ,ZnSe,0.310" ET,PLX
RT-MB312-500	W500	658108	5.0" FL – 1.5" Φ ,ZnSe,0.310" ET,PLX
RT-MB312-505	W505	o	5.0" FL – 2.0" Φ ,ZnSe,0.310" ET,PLX
RT-MB312-510	W510	o	7.5" FL – 2.0" Φ ,ZnSe,0.310" ET,PLX
RT-MB312-8858	6418858	o	7.5" FL – 2.0" Φ ,ZnSe,0.45" ET,PLX
RT-MB312-018MP5	W018	o	7.5" FL – 1.5" Φ ,ZnSe,0.310" ET,Low Absorption Black Lens,PLX
RT-MB312-505MP5	W505	o	5.0" FL – 2.0" Φ ,ZnSe,0.310" ET,Low Absorption Black Lens,PLX
RT-MB312-510MP5	W510	o	7.5" FL – 2.0" Φ ,ZnSe,0.310" ET,Low Absorption Black Lens,PLX

Precitec/大族/团结/楚天/华工/领创 CO2激光镜片

RT-PT317-0002	406294	o	5.0" FL – 1.5" Φ ,ZnSe,0.290" ET,MEN
RT-PT317-0001	452726	o	7.5" FL – 1.5" Φ ,ZnSe,0.125" ET,MEN
RT-PT317-6326	206326	o	5.0" FL – 2.0" Φ ,ZnSe,0.378" ET,MEN
RT-PT317-8275	628275	o	10.0" FL – 2.0" Φ ,ZnSe,0.310" ET,PLX
RT-PT317-0537	960537	o	10.0" FL – 2.0" Φ ,ZnSe,0.380" ET,PLX
RT-PT317-9527	779527	o	10.0" FL – 2.0" Φ ,ZnSe,0.500" ET,PLX

Precitec光纤激光切割头镜片

110255AAFBHE0118	o	o	LENS D30-F100弯月准直镜片
110255AAFBHE0119	o	o	LENS D30-F100双凸准直镜片
110255AAFBHE0120	o	o	LENS D30-F125弯月聚焦镜片
110255AAFBHE0121	o	o	LENS D30-F125双凸聚焦镜片
110255AAFBHE0124	o	o	LENS D30-F150弯月聚焦镜片
110255AAFBHE0125	o	o	LENS D30-F150双凸聚焦镜片
110255AACBHP0161	o	o	LENS D37-F100双凸准直镜片
110255AACBHP0162	o	o	LENS D37-F100弯月准直镜片
110255AACBHP0163	o	o	LENS D37-F150双凸聚焦镜片
110255AACBHP0164	o	o	LENS D37-F150弯月聚焦镜片

Trumpf CO2激光镜片

RT-TR300-0130	400130LMA	5013287	130FL – Φ 40.,ZnSe,0.290" ET,Men-Cut
RT-TR300-0250	0380115/400250LMA	5013244	250FL – Φ 40.,ZnSe,0.290" ET,Men-Cut
RT-TR300-2319	1772319/232114LMC	5018748	130FL – Φ 40.,ZnSe,0.290" ET,Men-Chip/Cut
RT-TR300-0805	1770805/933019LMC	5018834	250FL – Φ 40.,ZnSe,0.290" ET,Men-Chip/Cut
RT-TR300-8114	88114	o	5.0" FL – 1.5" Φ ,ZnSe,0.290" ET,Meniscus
RT-TR300-8114MP5	88114	o	5.0" FL – 1.5" Φ ,ZnSe,0.290" ET,Meniscus,Low Absorption Black Lens
RT-TR300-7517	97517	o	7.5" FL – 1.5" Φ ,ZnSe,0.290" ET,Meniscus
RT-TR300-7517MP5	97517	o	7.5" FL – 1.5" Φ ,ZnSe,0.290" ET,Meniscus,Low Absorption Black Lens

JQ Part#

Reference#

ALT Reference#

详细参数

Trumpf 光纤激光镜片

JQ Part#	Reference#	ALT Reference#	详细参数
RT-TR300-3107	1603107	o	Φ40mm,FL590mm,ET5.3mm

KUGLER进口原装铜镜

220KG35144	o	o	水冷平面反射镜-Flat mirror cooled,D70x25/HG/G1/8/M6/UE50
220KG35145	o	o	水冷平面圆偏镜-Flat mirror cooled,D70x25/PR/G1/8/M6/UE50
220KG35219	o	o	水冷平面反射镜-Flat mirror cooled,D50x25/HG/G1/8/M4/UE35
220KG15741	o	o	水冷平面圆偏镜-Flat mirror cooled,D50x25/PR/G1/8/M4/UE35
220KG14579	o	o	水冷斜面反射镜-D495/265/90/F/G1/8/M6
220KG14589	o	o	水冷斜面反射镜-D495/265/90/250/F/G1/8/M6
220KG70714	o	o	水冷斜面反射镜-D495/265/90/300/F/d5.3/KIS30*1
220KG25018	o	o	水冷斜面反射镜-D345/29/90/200/C//MO/d5/d6/LK190
220KG57650	o	o	平面圆偏镜-Flat mirror,D60X15/PR
220KG33481	o	o	平面反射镜-Flat mirror,D60x10/HG
o	o	o	平面反射镜-Flat mirror,D60x25/HG

Lasermech进口聚焦镜片

210YFS0002	o	o	LENS 7980 PCX D27.9 BFL60
210YFS0016	o	o	LENS 7980 PCX D27.9 BFL125
210YFS0013	o	o	LENS 7980 PCX D27.9 FL150
210YFS0007	o	o	LENS 7980 PCX D27.9 BFL200
210YFS0001	o	o	LENS 7980 PCX D38.1 BFL97.7
210YFS0011	o	o	LENS 7980 PCX D38.1 BFL123.4
210YFS0005	o	o	LENS 7980 PCX D38.1 BFL150

Lasermech进口保护镜片

210LCG0034	o	o	保护镜片 22.4mm DIA*4.1mm
210LCG0009	o	o	保护镜片 38.1mm DIA*1.5mm
210LCG0015	o	o	保护镜片 50.8mm DIA*1.5mm

RayTools聚焦/准直镜片

212YFS0016	o	o	LENS AR1064 7980 PCX D27.9 BFL125
212YFS0013	o	o	LENS AR1064 7980 PCX D27.9 BFL150
212YFS0007	o	o	LENS AR1064 7980 PCX D27.9 BFL200

JQ Part#

Reference#

ALT Reference#

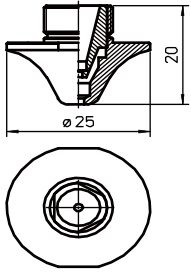
详细参数

RayTools聚焦/准直镜片

110255AACBHD0023	o	o	石英透镜—φ28 1064 75月牙
110255AAFBHD0024	o	o	石英透镜—φ28 1064 75双凸
110255AACBHD0019	o	o	石英透镜—φ28 1064 100mm月牙
110255AAFBHD0020	o	o	石英透镜—φ28 1064 100mm双凸
110255AACBHD0021	o	o	石英透镜—φ28 1064 125mm月牙
110255AAFBHD0022	o	o	石英透镜—φ28 1064 125mm双凸
110255AAFBHE0118	o	o	D30透镜—100mm月牙镜 6K
110255AACBHE0119	o	o	D30透镜—100mm双凸镜 6K
110255AAFBHE0120	o	o	D30透镜—125mm月牙镜 6K
110255AACBHE0121	o	o	D30透镜—125mm双凸镜 6K
110255AACBHE0124	o	o	D30透镜—150mm双凸镜 6K
110255AAFBHE0125	o	o	D30透镜—150mm月牙镜 6K

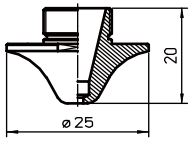
RayTools保护镜片

211LCG0009	o	o	φ38.1mm x 1.5mm
211LCG0034	o	o	φ22.4mm x 4.1mm
211LCG0035	o	o	φ27.9mm x 4.1mm
211LCG0068	o	o	φ30mm x 5mm
211LCG0069	o	o	φ50mm x 2mm
110255IAG0004	o	o	φ37mm x 7mm
211LCG0101	o	o	φ19.00mm x 1.00mm
211LCG0102	o	o	φ19.00mm x 6.5mm
211LCG0103	o	o	φ22.35mm x 4mm
211LCG0104	o	o	φ25.40mm x 4.00mm
211LCG0105	o	o	φ30.00mm x 1.5mm
211LCG0106	o	o	φ30.00mm x 4.00mm
211LCG0107	o	o	φ33.00mm x 1.50mm
211LCG0108	o	o	φ34mm x 3.00mm
211LCG0109	o	o	φ34mm x 5.00
211LCG0110	o	o	φ36mm x 5.0mm
211LCG0111	o	o	φ36.00mm x 5.10mm
211LCG0112	o	o	φ36.00mm x 5.11mm
211LCG0113	o	o	φ38.00mm x 2.00mm
211LCG0114	o	o	φ38.00mm x 2.01mm
211LCG0115	o	o	φ50.00mm x 2.01mm
211LCG0116	o	o	φ50.00mm x 8mm
211LCG0117	o	o	φ55.00mm x 1.50mm



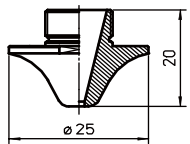
双层蘑菇头喷嘴

JQ Part#	Reference#	ALT Reference#	详细参数
RT-AM343-2361-1.2	1572361	L585X	Amada Double Mushroom Nozzle – 1.2 mm
RT-AM343-9813	71369813/71502038/71518550/71341779	L586X	Amada Double Mushroom Nozzle – 1.4 mm
RT-AM343-2361-1.7	1572361/71518548/1572380	L574X	Amada Double Mushroom Nozzle – 1.7 mm
RT-AM343-2361-2.0	1572361	L587X	Amada Double Mushroom Nozzle – 2.0 mm
RT-AM343-2361-2.5	71501059/71515394/71516789/1576398	L584X	Amada Double Mushroom Nozzle – 2.5 mm
RT-AM343-2361-3	1572361	L588X	Amada Double Mushroom Nozzle – 3.0 mm
RT-AM343-9817	71501060/71515395/71516790/1576399	L589X	Amada Double Mushroom Nozzle – 4.0 mm



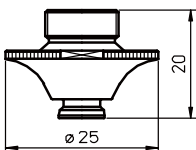
单层蘑菇头喷嘴

JQ Part#	Reference#	ALT Reference#	详细参数
RT-AM343-2362-0.8	1572362	L590X	Amada Single-Hole FlaredMushroom Nozzle – 0.8 mm
RT-AM343-2362-1.0	1572362	L591X	Amada Single-Hole FlaredMushroom Nozzle – 1.0 mm
RT-AM343-2362-1.2	71369812/71341778	L592X	Amada Single-Hole FlaredMushroom Nozzle – 1.2 mm
RT-AM343-2362-1.4	1572362	L593X	Amada Single-Hole FlaredMushroom Nozzle – 1.4 mm
RT-AM343-2362-1.5	1572362/1572368B	L597X	Amada Single-Hole FlaredMushroom Nozzle – 1.5 mm
RT-AM343-2317CP	1572362	L575X	Amada Single-Hole FlaredMushroom Nozzle – 1.7 mm
RT-AM343-2362-2.0	71369815/71515392	L594X	Amada Single-Hole FlaredMushroom Nozzle – 2.0 mm
RT-AM343-0025CP	L572X	L572X	Amada Single-Hole FlaredMushroom Nozzle – 2.5 mm
RT-AM343-2362-3.0	71501058/71515393	L595X	Amada Single-Hole FlaredMushroom Nozzle – 3.0 mm
RT-AM343-2362-4.0	1572362	L596X	Amada Single-Hole FlaredMushroom Nozzle – 4.0 mm



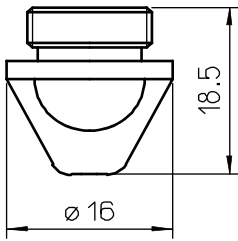
单层蘑菇头喷嘴

JQ Part#	Reference#	ALT Reference#	详细参数
RT-AM343-0004CP	o	L1027X	Amada Single-Hole FlaredMushroom Nozzle – 0.8 mm
RT-AM343-0005CP	o	L1028X	Amada Single-Hole FlaredMushroom Nozzle – 1.0 mm
RT-AM343-0006CP	o	L1029X	Amada Single-Hole FlaredMushroom Nozzle – 1.2 mm
RT-AM343-0007CP	o	L1030X	Amada Single-Hole FlaredMushroom Nozzle – 1.4 mm
RT-AM343-0001CP	o	L599X	Amada Single-Hole FlaredMushroom Nozzle – 1.5 mm
RT-AM343-0008CP	o	L1032X	Amada Single-Hole FlaredMushroom Nozzle – 1.7 mm
RT-AM343-0002CP	o	L598X	Amada Single-Hole FlaredMushroom Nozzle – 2.0 mm
RT-AM343-0009CP	o	L1033X	Amada Single-Hole FlaredMushroom Nozzle – 2.3 mm
RT-AM343-0003CP	o	L571X	Amada Single-Hole FlaredMushroom Nozzle – 3.0 mm



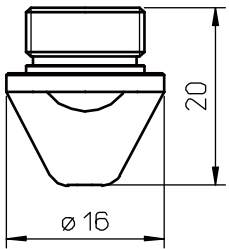
双层WACS喷嘴

JQ Part#	Reference#	ALT Reference#	详细参数
RT-AM367-1352CP	o	L1352X	Amada Double WACS CP Nozzle – 1.4 mm
RT-AM367-1353CP	o	L1353X	Amada Double WACS CP Nozzle – 1.7 mm
RT-AM367-1354CP	o	L1354X	Amada Double WACS CP Nozzle – 2.0 mm
RT-AM367-1355CP	71712335	L1355X	Amada Double WACS CP Nozzle – 2.5 mm
RT-AM367-1156CP	71712335	L1355X/TG	Amada Double WACS CP Nozzle – 2.5 mm w/coller
RT-AM367-1158CP	71712336/71461158	L1359X	Amada Double WACS CP Nozzle – 4.0 mm
RT-AM367-1157CP	o	L1359X/TG	Amada Double WACS CP Nozzle – 4.0 mm w/coller
RT-AM367-1159CP	o	L1360X	Amada Double WACS CP Nozzle – 5.0 mm



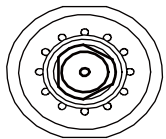
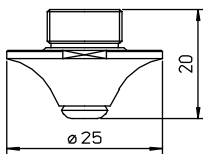
单层喷嘴

JQ Part#	Reference#	ALT Reference#	详细参数
RT-AM325-545U-1.0	1664545U-10	L134X	Amada Extended Nozzle – 1.0 mm
RT-AM325-545U-1.5	1664545U-15	L86X	Amada Extended Nozzle – 1.5 mm
RT-AM325-545U-2.0	1664545U/71341610	L137X	Amada Extended Nozzle – 2.0 mm
RT-AM325-545U-2.5	1664544U	L203X	Amada Extended Nozzle – 2.5 mm
RT-AM325-4544U	1664544U/71360142	L138X	Amada Extended Nozzle – 3.0 mm
RT-AM325-0400CP	o	L339X	Amada Extended Nozzle – 4.0 mm



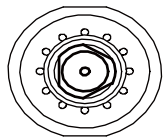
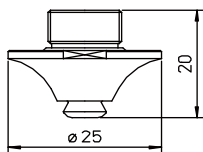
单层喷嘴

JQ Part#	Reference#	ALT Reference#	详细参数
RT-AM325-1770	71341770/1667110	L1285X	Amada Nozzle – 2.0 mm CP
RT-AM325-1730	o	L1287X	Amada Nozzle – 3.0 mm CP



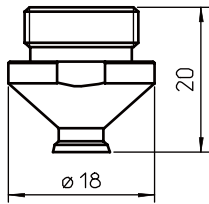
双层带孔喷嘴

JQ Part#	Reference#	ALT Reference#	详细参数
RT-AM386-2025CP	71502039	L1155X	Amada Double Nozzle – 2.5 mm CP w/holes
RT-AM386-2041CP	71502040	L1159X	Amada Double Nozzle – 4.0 mm CP w/holes



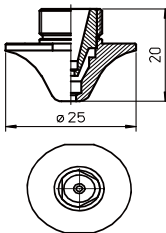
双层带孔喷嘴

JQ Part#	Reference#	ALT Reference#	详细参数
RT-AM367-1014CP	o	L1041X	Amada Double Nozzle – 1.4 mm CP w/holes
RT-AM367-1017CP	o	L1043X	Amada Double Nozzle – 1.7 mm CP w/holes
RT-AM367-1020CP	o	L1044X	Amada Double Nozzle – 2.0 mm CP w/holes
RT-AM367-2039	71502039	L1045X	Amada Double Nozzle – 2.5 mm CP w/holes
RT-AM367-2040	71502040	L1049X	Amada Double Nozzle – 4.0 mm CP w/holes
RT-AM367-2050CP	o	L1050X	Amada Double Nozzle – 5.0 mm CP w/holes



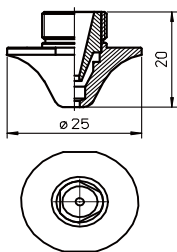
水辅助喷嘴

JQ Part#	Reference#	ALT Reference#	详细参数
RT-AM326-6015CP	71366090-15	L385X	Amada Water-Assist DoubleNozzle – 1.5 mm
RT-AM326-6020CP	71366090-20	L324X	Amada Water-Assist DoubleNozzle – 2.0 mm
RT-AM326-6025CP	71366090-25	L325X	Amada Water-Assist DoubleNozzle – 2.5 mm
RT-AM326-6030CP	71366090-30	L326X	Amada Water-Assist DoubleNozzle – 3.0 mm
RT-AM326-6040CP	71366090-40	L757X	Amada Water-Assist DoubleNozzle – 4.0 mm



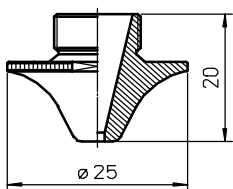
双层ECO喷嘴

JQ Part#	Reference#	ALT Reference#	详细参数
RT-AM367-8550	71518550	L1401X	Amada Double ECO CUT Nozzle – 1.4 mm
RT-AM367-6789	71516789	L1403X	Amada Double ECO CUT Nozzle – 2.5 mm
RT-AM367-6795	o	L1404X	Amada Double ECO CUT Nozzle – 3.0 mm
RT-AM367-6790	o	L1405X	Amada Double ECO CUT Nozzle – 4.0 mm



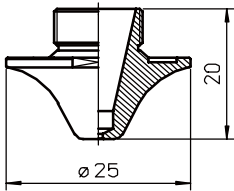
双层AL喷嘴

JQ Part#	Reference#	ALT Reference#	详细参数
RT-AM367-6791CP	7151690	L1406X	Amada Double AL Nozzle – 1.4 mm



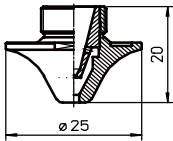
Clean-Cut喷嘴

JQ Part#	Reference#	ALT Reference#	详细参数
RT-AM367-1421CP	o	L1421XH	Amada Clean-Cut Nozzle – 1.5 mm
RT-AM367-1422CP	71502043	L1422XH	Amada Clean-Cut Nozzle – 2.0mm
RT-AM367-1423CP	71502044	L1423XH	Amada Clean-Cut Nozzle – 3.0mm
RT-AM367-1424CP	o	L1424XH	Amada Clean-Cut Nozzle – 2.5mm



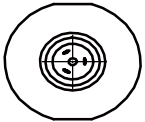
Fe CP喷嘴

JQ Part#	Reference#	ALT Reference#	详细参数
RT-AM367-1560	o	L1560X	Amada Nozzle – 0.8 mm Fe CP
RT-AM367-1561	71570021	L1561X	Amada Nozzle – 1.0 mm Fe CP
RT-AM367-1562	o	L1562X	Amada Nozzle – 1.2 mm Fe CP
RT-AM367-1563	o	L1563X	Amada Nozzle – 1.4 mm Fe CP

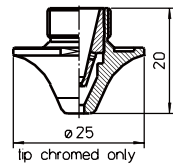


Fe CP双层喷嘴

JQ Part#	Reference#	ALT Reference#	详细参数
RT-AM367-0020	71570022	L1645X	Amada Double Nozzle – 2.0 mm Fe CP
RT-AM367-0025	o	L1646X	Amada Double Nozzle – 2.5 mm Fe CP
RT-AM367-0040	o	L1649X	Amada Double Nozzle – 4.0 mm Fe CP



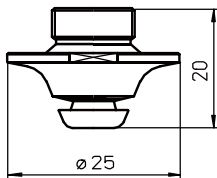
JQ Part#	Reference#	ALT Reference#	详细参数
RT-AM367-1161CP	o	L1644XH	Amada Double Nozzle – 1.5 mm CP
RT-AM367-1163CP	o	L1645XH	Amada Double Nozzle – 2.0 mm CP



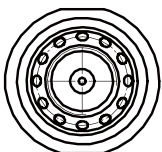
双层镀铬喷嘴

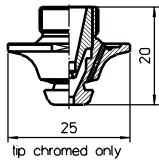


JQ Part#	Reference#	ALT Reference#	详细参数
RT-AM367-0019	o	L6353XH	Amada Nozzle – S0.8 mm Fe CP
RT-AM367-0019C	o	L6353XH/TG	Amada Nozzle – S0.8 mm Fe CP w/coller
RT-AM367-0030	71570030	L6354XH	Amada Nozzle – S1.0 mm Fe CP
RT-AM367-0030C	71570030	L6354XH/TG	Amada Nozzle – S1.0 mm Fe CP w/coller
RT-AM367-0023	71570023	L6355XH	Amada Nozzle – S1.2 mm Fe CP
RT-AM367-0023C	71570023	L6355XH/TG	Amada Nozzle – S1.2 mm Fe CP w/coller
RT-AM367-0024	o	L6356XH	Amada Nozzle – S1.4 mm Fe CP
RT-AM367-0024C	o	L6356XH/TG	Amada Nozzle – S1.4 mm Fe CP w/coller
RT-AM367-0027	o	L6357XH	Amada Nozzle – S1.7 mm Fe CP
RT-AM367-0027C	o	L6357XH/TG	Amada Nozzle – S1.7 mm Fe CP w/coller
RT-AM367-0026	o	L6358XH	Amada Nozzle – S2.0 mm Fe CP
RT-AM367-0026C	o	L6358XH/TG	Amada Nozzle – S2.0 mm Fe CP w/coller



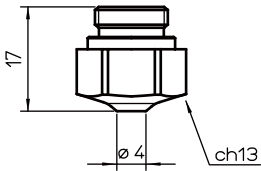
Fe CP/SI喷嘴





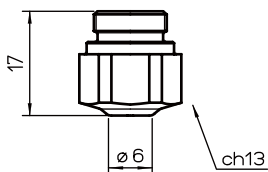
Fe CP双层喷嘴

JQ Part#	Reference#	ALT Reference#	详细参数
RT-AM367-1900CP	o	L1900XH	Amada Nozzle – 1.2 mm Fe CP
RT-AM367-1901CP	o	L1901XH	Amada Nozzle – 1.5 mm Fe CP



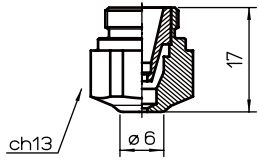
HK单层喷嘴

JQ Part#	Reference#	ALT Reference#	详细参数
RT-BY310-4277	3-04277	L674	Bystronic HK08 Nozzle – 0.8 mm
RT-BY310-1910	3-01910	L72	Bystronic HK10 Nozzle – 1.0 mm
RT-BY310-1911	3-01911	L121	Bystronic HK12 Nozzle – 1.25 mm
RT-BY310-1912	3-01912	L73	Bystronic HK15 Nozzle – 1.5 mm
RT-BY310-1913	3-01913	L122	Bystronic HK17 Nozzle – 1.75 mm
RT-BY310-1910CP	3-01910	L72X	Bystronic HK10 Nozzle – 1.0 mm (Chromed)
RT-BY310-1911CP	3-01911	L121X	Bystronic HK12 Nozzle – 1.25 mm (Chromed)
RT-BY310-1912CP	3-01912	L73X	Bystronic HK15 Nozzle – 1.5 mm (Chromed)
RT-BY310-1913CP	3-01913	L122X	Bystronic HK17 Nozzle – 1.75 mm (Chromed)



HK单层喷嘴

JQ Part#	Reference#	ALT Reference#	详细参数
RT-BY310-1914	3-01914	L123	Bystronic HK20 Nozzle – 2.0 mm
RT-BY310-1915	3-03854/3-01915	L140	Bystronic HK25 Nozzle – 2.5 mm
RT-BY310-6112	3-06112	L265	Bystronic HK30 Nozzle – 3.0 mm
RT-BY310-1914CP	3-01914	L123X	Bystronic HK20 Nozzle – 2.0 mm (Chromed)
RT-BY310-1915CP	3-03854/3-01915	L140X	Bystronic HK25 Nozzle – 2.5 mm (Chromed)
RT-BY310-6112CP	3-06112	L265X	Bystronic HK30 Nozzle – 3.0 mm (Chromed)

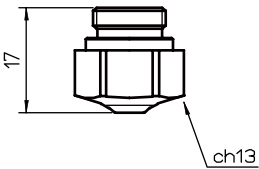


NK双层喷嘴



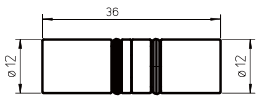
镀铬NK双层喷嘴

JQ Part#	Reference#	ALT Reference#	详细参数
RT-BY310-6058	3-16058	L1363	Bystronic NK10 Double Nozzle – 1.0 mm
RT-BY310-6059	3-16059	L1364	Bystronic NK12 Double Nozzle – 1.25 mm
RT-BY310-6060	3-16060	L1365	Bystronic NK15 Double Nozzle – 1.5 mm
RT-BY310-4317	3-14317	L1366	Bystronic NK17 Double Nozzle – 1.75 mm
RT-BY310-0005	3-14318	L604	Bystronic NK20 Double Nozzle – 2.0 mm
RT-BY310-0006	3-14319	L605	Bystronic NK25 Double Nozzle – 2.5 mm
RT-BY310-6061	3-16061	L613	Bystronic NK30 Double Nozzle – 3.0 mm
RT-BY310-6058CP	3-16058	L1363X	Bystronic NK10 Double Nozzle – 1.0 mm (Chromed)
RT-BY310-6059CP	3-16059	L1364X	Bystronic NK12 Double Nozzle – 1.25 mm (Chromed)
RT-BY310-6060CP	3-16060	L1365X	Bystronic NK15 Double Nozzle – 1.5 mm (Chromed)
RT-BY310-4317CP	3-14317	L1366X	Bystronic NK17 Double Nozzle – 1.75 mm (Chromed)
RT-BY310-0005CP	3-14318	L604X	Bystronic NK20 Double Nozzle – 2.0 mm (Chromed)
RT-BY310-0006CP	3-14319	L605X	Bystronic NK25 Double Nozzle – 2.5 mm (Chromed)
RT-BY310-6061CP	3-16061	L613X	Bystronic NK30 Double Nozzle – 3.0 mm (Chromed)



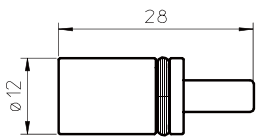
K型单层喷嘴

JQ Part#	Reference#	ALT Reference#	详细参数
RT-BY310-4273	3-04273	L83	Bystronic K08 Nozzle – 0.8 mm
RT-BY310-1905	3-01905	L116	Bystronic K10 Nozzle – 1.0 mm
RT-BY310-1906	3-01906	L117	Bystronic K12 Nozzle – 1.25 mm
RT-BY310-1907	3-01907	L118	Bystronic K15 Nozzle – 1.5 mm
RT-BY310-1908	3-01908	L119	Bystronic K17 Nozzle – 1.75 mm
RT-BY310-1909	3-01909	L120	Bystronic K20 Nozzle – 2.0 mm
RT-BY310-4274	3-04274	L675	Bystronic K25 Nozzle – 2.5 mm
RT-BY310-4275	3-04275	L678	Bystronic K25 Nozzle – 3.0 mm



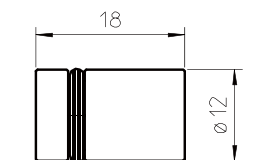
水管接头套装

JQ Part#	Reference#	ALT Reference#	详细参数
RT-BY327-3210	7023207/7023208	AL418	Bystronic Water connector set



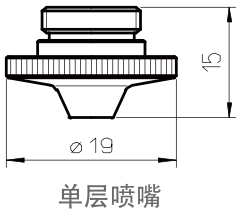
水管母接头

JQ Part#	Reference#	ALT Reference#	详细参数
RT-BY327-3207	7023207	AL416	Bystronic Water connector male

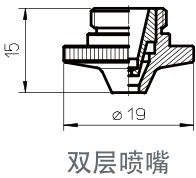


水管公接头

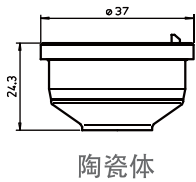
JQ Part#	Reference#	ALT Reference#	详细参数
RT-BY327-3208	7023208	AL417	Bystronic Water connector female



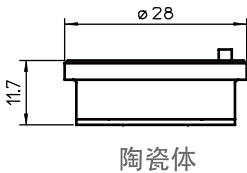
JQ Part#	Reference#	ALT Reference#	详细参数
RT-HW405-2008	NP08,MX-0988	L1482	Nozzle - 0.8 mm
RT-HW405-2010	NP10,MX-0989	L1483	Nozzle - 1.0 mm
RT-HW405-2012	NP12,MX-0990	L1484	Nozzle - 1.2 mm
RT-HW405-2015	NP15MX-0991	L1485	Nozzle - 1.5 mm
RT-HW405-2020	NP20,MX-0992	L1486	Nozzle - 2.0 mm
RT-HW405-2018	NP18,MX-0993	L1487	Nozzle - 1.8 mm
RT-HW405-2025	NP25,MX-0994	L1488	Nozzle - 2.5 mm
RT-HW405-2030	NP30,MX-0995	L1489	Nozzle - 3.0 mm



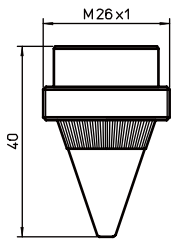
JQ Part#	Reference#	ALT Reference#	详细参数
RT-HW405-4010	TP10	L1521	Nozzle - 1.0 mm Double
RT-HW405-4015	TP15	L1522	Nozzle - 1.5 mm Double
RT-HW405-4020	TP20	L1523	Nozzle - 2.0 mm Double
RT-HW405-4025	TP25	L1524	Nozzle - 2.5 mm Double
RT-HW405-4030	TP30	L1526	Nozzle - 3.0 mm Double
RT-HW405-4040	TP40	L1525	Nozzle - 4.0 mm Double



JQ Part#	Reference#	ALT Reference#	详细参数
RT-HW405-1201	HCH-S01201	AL420	Nozzle Holder-ceramic

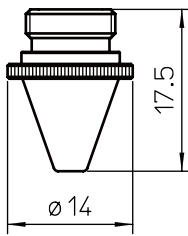


JQ Part#	Reference#	ALT Reference#	详细参数
RT-HW405-0811	mx-0875	AL408	Nozzle Holder-ceramic



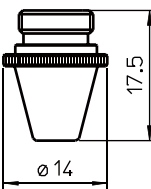
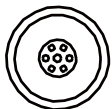
单层喷嘴

JQ Part#	Reference#	ALT Reference#	详细参数
RT-MZ323-0060-1.0	46523300060	L61	Mazak Old-Style,One-Piece Nozzle – 1.0 mm
RT-MZ323-0061-1.5	46523300061	L84	Mazak Old-Style,One-Piece Nozzle – 1.5 mm
RT-MZ323-0063-2.0	46523300063	L51	Mazak Old-Style,One-Piece Nozzle – 2.0 mm



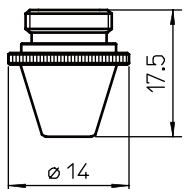
薄型喷嘴

JQ Part#	Reference#	ALT Reference#	详细参数
RT-MZ321-0521-0.8	46603350521	L266	Mazak Adapter Tip (Thin) – 0.8 mm
RT-MZ321-0521-1.0	46603350521	L250	Mazak Adapter Tip (Thin) – 1.0 mm
RT-MZ321-0521-1.2	46603350521	L251	Mazak Adapter Tip (Thin) – 1.2 mm
RT-MZ321-0520-1.5	46603350520	L252	Mazak Adapter Tip (Thin) – 1.5 mm
RT-MZ321-0522-2.0	46603350522	L254	Mazak Adapter Tip (Thin) – 2.0 mm
RT-MZ321-0522-2.5	46603350522	L770	Mazak Adapter Tip (Thin) – 2.5 mm
RT-MZ321-0522-3.0	46603351281	L771	Mazak Adapter Tip (Thin) – 3.0 mm



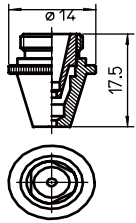
多孔喷嘴

JQ Part#	Reference#	ALT Reference#	详细参数
RT-MZ322-0523	46603350523	L492	Mazak Shower Nozzle – 1.0 mm
RT-MZ322-0523-1.5	o	L493	Mazak Shower Nozzle – 1.5 mm
RT-MZ322-0523-2.0	o	L497	Mazak Shower Nozzle – 2.0 mm



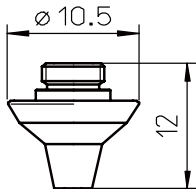
单层喷嘴

JQ Part#	Reference#	ALT Reference#	详细参数
RT-MZ322-0008	46603350508	L78	Mazak Adapter Tip (Broad) – 0.8 mm
RT-MZ322-0511-1.0	46603350511	L69	Mazak Adapter Tip (Broad) – 1.0 mm
RT-MZ322-0512-1.2	46603350512	o	Mazak Adapter Tip (Broad) – 1.2 mm
RT-MZ322-0520-1.5	4660335052B	o	Mazak Adapter Tip (Broad) – 1.5 mm
RT-MZ322-0517-1.7	46603350517	o	Mazak Adapter Tip (Broad) – 1.7 mm
RT-MZ322-0522-2.0	4660335052C	o	Mazak Adapter Tip (Broad) – 2.0 mm
RT-MZ322-0022	46603350522-2.2	o	Mazak Adapter Tip (Broad) – 2.2 mm
RT-MZ322-0525-2.5	46603350525	o	Mazak Adapter Tip (Broad) – 2.5 mm
RT-MZ322-0530-3.0	46603350530	o	Mazak Adapter Tip (Broad) – 3.0 mm



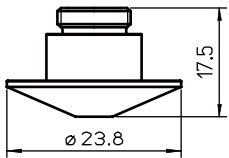
镀铬双层喷嘴

JQ Part#	Reference#	ALT Reference#	详细参数
RT-MZ346-0002CP		L616X	Mazak Chromed Double Nozzle – 1.2 mm
RT-MZ346-0003CP	46683302380	L617X	Mazak Chromed Double Nozzle – 1.5 mm
RT-MZ346-0006CP	46683302390	L620X	Mazak Chromed Double Nozzle – 2.0 mm
RT-MZ346-0008CP	46683302400	L622X	Mazak Chromed Double Nozzle – 2.5 mm
RT-MZ346-0009CP	46683302410	L623X	Mazak Chromed Double Nozzle – 3.0 mm



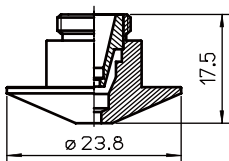
3D喷嘴

JQ Part#	Reference#	ALT Reference#	详细参数
RT-PT347-0005	46713300290-10	L554	Mazak 3D Nozzle – 1.0 mm
RT-PT347-0290-1.2	46713300290-12	L555	Mazak 3D Nozzle – 1.2 mm
RT-PT347-0290	46713300290-15/P0352-381-00 15	L556	Mazak 3D Nozzle – 1.5 mm
RT-PT347-0118	o	L557	Mazak 3D Nozzle – 1.8 mm
RT-PT347-0280	46713300310/P0352-382-00020	L558	Mazak 3D Nozzle – 2.0 mm
RT-PT347-0001	46713300280-25	L560	Mazak 3D Nozzle – 2.5 mm
RT-PT347-0002	46713300280-30	L563	Mazak 3D Nozzle – 3.0 mm



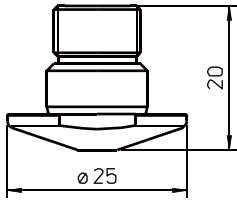
侧吹喷嘴

JQ Part#	Reference#	ALT Reference#	详细参数
RT-MZ335-0004	o	L428	Mazak Side Blow Nozzle – 1.0 mm
RT-MZ335-1950	46683301950	L429	Mazak Side Blow Nozzle – 1.5 mm
RT-MZ335-1821	46683301821	L430	Mazak Side Blow Nozzle – 2.0 mm
RT-MZ335-1960	46683301960	L431	Mazak Side Blow Nozzle – 2.5 mm
RT-MZ335-1970	46683301970	L432	Mazak Side Blow Nozzle – 3.0 mm
RT-MZ335-0006	o	L472	Mazak Side Blow Nozzle – 3.5 mm
RT-MZ335-0013	o	L473	Mazak Side Blow Nozzle – 4.0 mm



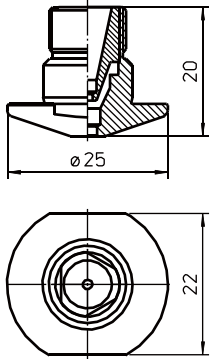
侧吹双层喷嘴

JQ Part#	Reference#	ALT Reference#	详细参数
RT-MZ360-0001	o	L850	Mazak Side Blow Double Nozzle – 1.0 mm
RT-MZ360-0002	o	L851	Mazak Side Blow Double Nozzle – 1.2 mm
RT-MZ360-0003	o	L852	Mazak Side Blow Double Nozzle – 1.5 mm
RT-MZ360-0004	o	L858	Mazak Side Blow Double Nozzle – 1.8 mm
RT-MZ360-0005	o	L853	Mazak Side Blow Double Nozzle – 2.0 mm
RT-MZ360-0006	o	L849	Mazak Side Blow Double Nozzle – 2.2 mm
RT-MZ360-0007	o	L854	Mazak Side Blow Double Nozzle – 2.5 mm
RT-MZ360-0008	o	L855	Mazak Side Blow Double Nozzle – 3.0 mm
RT-MZ360-0009	o	L856	Mazak Side Blow Double Nozzle – 3.5 mm
RT-MZ360-0001CP	o	L850X	Mazak Side Blow Double Nozzle – 1.0 mm CP
RT-MZ360-0002CP	o	L851X	Mazak Side Blow Double Nozzle – 1.2 mm CP
RT-MZ360-0003CP	46683302420	L852X	Mazak Side Blow Double Nozzle – 1.5 mm CP
RT-MZ360-0004CP	o	L858X	Mazak Side Blow Double Nozzle – 1.8 mm CP
RT-MZ360-0005CP	46683302430	L853X	Mazak Side Blow Double Nozzle – 2.0 mm CP
RT-MZ360-0006CP	o	L849X	Mazak Side Blow Double Nozzle – 2.2 mm CP
RT-MZ360-0007CP	46683302440	L854X	Mazak Side Blow Double Nozzle – 2.5 mm CP
RT-MZ360-0008CP	46683302450	L855X	Mazak Side Blow Double Nozzle – 3.0 mm CP
RT-MZ360-0009CP	o	L856X	Mazak Side Blow Double Nozzle – 3.5 mm CP



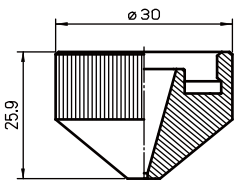
HyperGear单层喷嘴

JQ Part#	Reference#	ALT Reference#	详细参数
RT-MZ368-4470CP	46143304470	L942X	Mazak HyperGear Nozzle – 1.2 mm CP
RT-MZ368-4450CP	46143304450	L943X	Mazak HyperGear Nozzle – 1.5 mm CP
RT-MZ368-4460CP	46143304460	L944X	Mazak HyperGear Nozzle – 2.0 mm CP
RT-MZ368-4480CP	46143304480	L945X	Mazak HyperGear Nozzle – 2.5 mm CP
RT-MZ368-4490CP	46143304490	L946X	Mazak HyperGear Nozzle – 3.0 mm CP
RT-MZ368-4500CP	46143304500	L947X	Mazak HyperGear Nozzle – 3.5 mm CP
RT-MZ368-4510CP	46143304510	L948X	Mazak HyperGear Nozzle – 4.0 mm CP



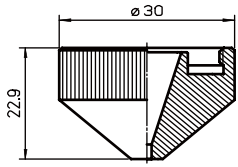
HyperGear双层喷嘴

JQ Part#	Reference#	ALT Reference#	详细参数
RT-MZ373-0001	o	L952X	Mazak HyperGear Double Nozzle – 1.2 mm CP
RT-MZ373-0005CP	o	L953X	Mazak HyperGear Double Nozzle – 1.5 mm CP
RT-MZ373-0003	o	L954X	Mazak HyperGear Double Nozzle – 2.0 mm CP
RT-MZ373-0004	o	L955X	Mazak HyperGear Double Nozzle – 2.5 mm CP
RT-MZ373-0005	o	L956X	Mazak HyperGear Double Nozzle – 3.0 mm CP
RT-MZ373-0006	o	L957X	Mazak HyperGear Double Nozzle – 3.5 mm CP
RT-MZ373-0007	o	L958X	Mazak HyperGear Double Nozzle – 4.0 mm CP



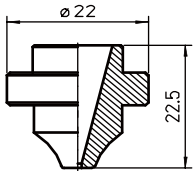
单层喷嘴

JQ Part#	Reference#	ALT Reference#	详细参数
RT-MB334-1249	W1249	L398	Mitsubishi Single-Hole Shield Nozzle – 1.0 mm
RT-MB334-1256	W1256	L397	Mitsubishi Single-Hole Shield Nozzle – 1.2 mm
RT-MB334-1250	W1250	L399	Mitsubishi Single-Hole Shield Nozzle – 1.5 mm
RT-MB334-1251	W1251	L702	Mitsubishi Single-Hole Shield Nozzle – 2.0 mm
RT-MB334-1252	W1252	L703	Mitsubishi Single-Hole Shield Nozzle – 2.5 mm
RT-MB334-1253	W1253	L704	Mitsubishi Single-Hole Shield Nozzle – 3.0 mm
RT-MB334-1254	W1254	L705	Mitsubishi Single-Hole Shield Nozzle – 3.5 mm
RT-MB334-1255	W1255	L706	Mitsubishi Single-Hole Shield Nozzle – 4.0 mm



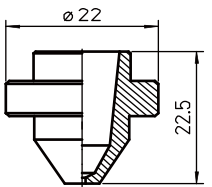
短单层喷嘴

JQ Part#	Reference#	ALT Reference#	详细参数
RT-MB334-1626	W1626	L910	Mitsubishi Shield Nozzle (Short Style) – 1.0 mm
RT-MB334-1627	W1627	L911	Mitsubishi Shield Nozzle (Short Style) – 1.2 mm
RT-MB334-1628	W1628	L912	Mitsubishi Shield Nozzle (Short Style) – 1.5 mm
RT-MB334-1629	W1629	L913	Mitsubishi Shield Nozzle (Short Style) – 2.0 mm
RT-MB334-1630	W1630	L914	Mitsubishi Shield Nozzle (Short Style) – 2.5 mm
RT-MB334-1664	W1664	L915	Mitsubishi Shield Nozzle (Short Style) – 3.0 mm
RT-MB334-1665	W1665	L916	Mitsubishi Shield Nozzle (Short Style) – 3.5 mm
RT-MB334-1666	W1666	L917	Mitsubishi Shield Nozzle (Short Style) – 4.0 mm



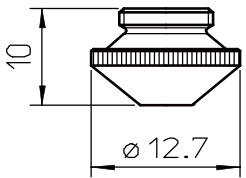
薄型喷嘴

JQ Part#	Reference#	ALT Reference#	详细参数
RT-AM326-0018	718000018	L1134	Nozzle – 1.5 mm
RT-AM326-0019	718000019	L1135	Nozzle – 2.0 mm
RT-AM326-0020	718000020	L1136	Nozzle – 2.5 mm
RT-AM326-0021	718000021	L1137	Nozzle – 3.0 mm
RT-AM326-0022	718000022	L1138	Nozzle – 3.5 mm



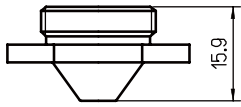
多孔喷嘴

JQ Part#	Reference#	ALT Reference#	详细参数
RT-AM387-0016	71800016	L1125	Nozzle – 1.0 mm
RT-AM387-1901	W18Q93309101	L1128	Nozzle – 2.5 mm
RT-AM387-1902	W18Q93309102	L1129	Nozzle – 3.0 mm



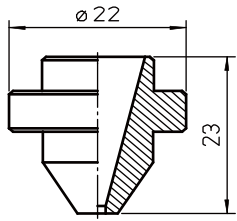
单层喷嘴

JQ Part#	Reference#	ALT Reference#	详细参数
RT-PT-0013	W222	L400	Mitsubishi Nozzle – 0.8 mm
RT-PT-0014	W223	L401	Mitsubishi Nozzle – 1.0 mm
RT-PT-0015	W228	L402	Mitsubishi Nozzle – 1.2 mm
RT-PT-0016	W224	L403	Mitsubishi Nozzle – 1.5 mm
RT-PT-0018	o	L543	Mitsubishi Nozzle – 1.8 mm
RT-PT-0937	W225	L544	Mitsubishi Nozzle – 2.0 mm
RT-PT-1791	W227	L545	Mitsubishi Nozzle – 2.5 mm



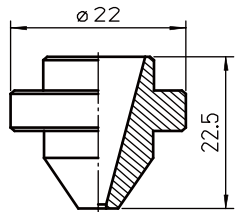
单层喷嘴

JQ Part#	Reference#	ALT Reference#	详细参数
RT-MB330-000	W001-1.0	L548	Mitsubishi Nozzle – 1.0 mm
RT-MB330-001	W001	L549	Mitsubishi Nozzle – 1.5 mm
RT-MB330-002	W002	L550	Mitsubishi Nozzle – 2.0 mm
RT-MB330-004	W004	L551	Mitsubishi Nozzle – 2.5 mm
RT-MB330-003	W003	L552	Mitsubishi Nozzle – 3.0 mm



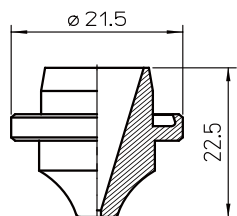
单层喷嘴

JQ Part#	Reference#	ALT Reference#	详细参数
RT-MB327-327-1	o	L354	Mitsubishi Single-Hole Nozzle – 1.0 mm
RT-MB327-777	W777	L363	Mitsubishi Single-Hole Nozzle – 1.2 mm
RT-MB327-266	W266	L355	Mitsubishi Single-Hole Nozzle – 1.5 mm
RT-MB327-267	W267	L356	Mitsubishi Single-Hole Nozzle – 2.0 mm
RT-MB327-776	W776	L357	Mitsubishi Single-Hole Nozzle – 2.5 mm
RT-MB327-268	W268	L358	Mitsubishi Single-Hole Nozzle – 3.0 mm



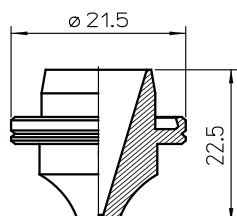
单层喷嘴

JQ Part#	Reference#	ALT Reference#	详细参数
RT-AM387-0001	71800016A0	L1126	Nozzle – 1.0 mm w/radius no grooves



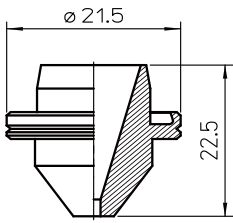
单层喷嘴

JQ Part#	Reference#	ALT Reference#	详细参数
RT-MB327-1620	BQ983D150-H01	L1620	Mitsubishi Nozzle – 1.0 mm
RT-MB327-1633	BQ983D314-H01	L1633	Mitsubishi Nozzle – 1.4 mm



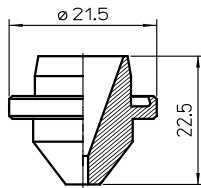
单层喷嘴

JQ Part#	Reference#	ALT Reference#	详细参数
RT-MB327-1621	BQ983D151-H01	L1621	Mitsubishi Nozzle – 1.2 mm



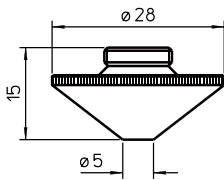
单层喷嘴

JQ Part#	Reference#	ALT Reference#	详细参数
RT-MB327-1622	BQ983D152-H01	L1622	Mitsubishi Nozzle – 1.7 mm



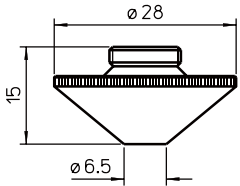
单层喷嘴

JQ Part#	Reference#	ALT Reference#	详细参数
RT-MB327-1623	BQ983D153-H01	L1623	Mitsubishi Nozzle – 1.5 mm
RT-MB327-1624	BQ983D153-H02	L1624	Mitsubishi Nozzle – 2.0 mm
RT-MB327-1625	BQ983D314-H03	L1625	Mitsubishi Nozzle – 2.5 mm
RT-MB327-1626	BQ983D151-H04	L1626	Mitsubishi Nozzle – 3.0 mm
RT-MB327-1627	BQ983D152-H05	L1627	Mitsubishi Nozzle – 3.5 mm



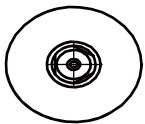
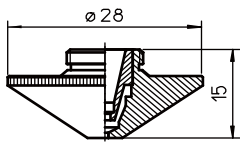
单层喷嘴

JQ Part#	Reference#	ALT Reference#	详细参数
RT-PT345-1548	281548/P0591-571-00010	L234	Nozzle – 1.0 mm HD
RT-PT345-1549	281549/P0591-572-00012	L235	Nozzle – 1.2 mm HD
RT-PT345-1463	281463/P0591-573-00015	L236	Nozzle – 1.5 mm HD
RT-PT345-0001	P0591-574-00018	L237	Nozzle – 1.8 mm HD
RT-PT345-1550	281550/P0591-575-00020	L238	Nozzle – 2.0 mm HD
RT-PT345-0003	o	L239	Nozzle – 2.3 mm HD
RT-PT345-1551	281551/P0591-576-00025	L240	Nozzle – 2.5 mm HD
RT-PT345-0002	o	L241	Nozzle – 3.0 mm HD
RT-PT345-0006	o	L827	Nozzle – 3.5 mm HD
RT-PT345-0004	o	L828	Nozzle – 4.0 mm HD
RT-PT345-0007	o	L829	Nozzle – 4.5 mm HD
RT-PT345-0830	o	L830	Nozzle – 5.0 mm HD
RT-PT345-1548CP	281548/P0591-571-00010	L234X	Nozzle – 1.0 mm HD
RT-PT345-1549CP	281549/P0591-572-00012	L235X	Nozzle – 1.2 mm HD
RT-PT345-1463CP	281463/P0591-573-00015	L236X	Nozzle – 1.5 mm HD
RT-PT345-0001CP	P0591-574-00018	L237X	Nozzle – 1.8 mm HD
RT-PT345-1550CP	281550/P0591-575-00020	L238X	Nozzle – 2.0 mm HD
RT-PT345-0003CP	o	L239X	Nozzle – 2.3 mm HD
RT-PT345-1551CP	281551/P0591-576-00025	L240X	Nozzle – 2.5 mm HD
RT-PT345-0002CP	o	L241X	Nozzle – 3.0 mm HD
RT-PT345-0006CP	o	L827X	Nozzle – 3.5 mm HD
RT-PT345-0004CP	o	L828X	Nozzle – 4.0 mm HD
RT-PT345-0007CP	o	L829X	Nozzle – 4.5 mm HD



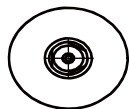
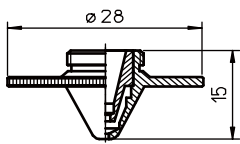
单层喷嘴

JQ Part#	Reference#	ALT Reference#	详细参数
RT-PT345-1936	o	L1936	Nozzle – 4.0 mm HD Large Head
RT-PT345-1937	o	L1937	Nozzle – 4.5 mm HD Large Head
RT-PT345-0830	o	L830	Nozzle – 5.0 mm HD Large Head
RT-PT345-1936CP	o	L1936X	Nozzle – 4.0 mm HD CP Large Head
RT-PT345-1937CP	o	L1937X	Nozzle – 4.5 mm HD CP Large Head
RT-PT345-0830CP	o	L830X	Nozzle – 5.0 mm HD CP Large Head



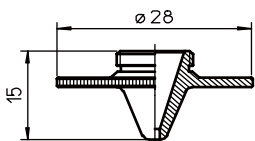
双层喷嘴

JQ Part#	Reference#	ALT Reference#	详细参数
RT-PT358-0669	o	L669	Nozzle – 0.8 mm Double
RT-PT358-0010	o	L660	Nozzle – 1.0 mm Double
RT-PT358-0125	o	L661	Nozzle – 1.2 mm Double
RT-PT358-0014	o	o	Nozzle – 1.4 mm Double
RT-PT358-0015	o	L662	Nozzle – 1.5 mm Double
RT-PT358-0020	o	L664	Nozzle – 2.0 mm Double
RT-PT358-0007	o	L666	Nozzle – 2.5 mm Double
RT-PT358-0030	o	L667	Nozzle – 3.0 mm Double
RT-PT358-0035	o	L668	Nozzle – 3.5 mm Double
RT-PT358-0008CP	o	L669X	Nozzle – 0.8 mm Double CP
RT-PT358-0010CP	o	L660X	Nozzle – 1.0 mm Double CP
RT-PT358-0125CP	o	L661X	Nozzle – 1.2 mm Double CP
RT-PT358-0015CP	o	L662X	Nozzle – 1.5 mm Double CP
RT-PT358-0020CP	o	L664X	Nozzle – 2.0 mm Double CP
RT-PT358-0025CP	o	L666X	Nozzle – 2.5 mm DoubleCP
RT-PT358-0030CP	o	L667X	Nozzle – 3.0 mm Double CP
RT-PT358-0035CP	o	L668X	Nozzle – 3.5 mm Double CP



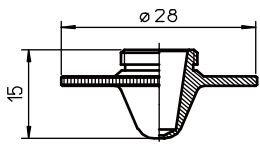
双层喷嘴

JQ Part#	Reference#	ALT Reference#	详细参数
RT-PT358-0001	6930250001	L1348	Nozzle – 0.8 mm 3D Double
RT-PT358-0002	6930250002	L1349	Nozzle – 1.0 mm 3D Double
RT-PT358-0003	6930250003	L1350	Nozzle – 1.2 mm 3D Double
RT-PT358-0004	6930250004	L1351	Nozzle – 1.5 mm 3D Double
RT-PT358-0005	o	L1470	Nozzle – 1.8 mm 3D Double
RT-PT358-0001CP	o	L1348X	Nozzle – 0.8 mm 3D Double CP
RT-PT358-0002CP	o	L1349X	Nozzle – 1.0 mm 3D Double CP
RT-PT358-0003CP	o	L1350X	Nozzle – 1.2 mm 3D Double CP
RT-PT358-0004CP	o	L1351X	Nozzle – 1.5 mm 3D Double CP
RT-PT358-0005CP	o	L1470X	Nozzle – 1.8 mm 3D Double CP



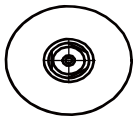
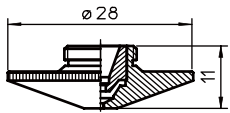
单层喷嘴

JQ Part#	Reference#	ALT Reference#	详细参数
RT-PT406-0001	o	L738	Nozzle – 1.0 mm HD
RT-PT406-0002	o	L739	Nozzle – 1.25 mm HD
RT-PT406-0003	o	L740	Nozzle – 1.5 mm HD



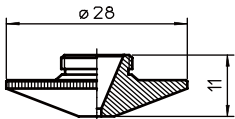
单层喷嘴

JQ Part#	Reference#	ALT Reference#	详细参数
RT-PT406-0008	o	L792	Nozzle – 0.8 mm
RT-PT406-0010	o	L793	Nozzle – 1.0 mm
RT-PT406-0125	o	L794	Nozzle – 1.25 mm
RT-PT406-0015	o	L742	Nozzle – 1.5 mm
RT-PT406-0018	o	L743	Nozzle – 1.8 mm
RT-PT406-0020	o	L744	Nozzle – 2.0 mm



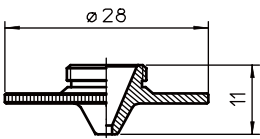
双层喷嘴

JQ Part#	Reference#	ALT Reference#	详细参数
RT-PT377-0001	o	L1179	Nozzle – 1.0 mm Double
RT-PT377-0002	o	L1180	Nozzle – 1.5 mm Double
RT-PT377-0003	o	L1181	Nozzle – 2.0 mm Double
RT-PT377-0004	o	L1182	Nozzle – 2.5 mm Double
RT-PT377-0005	o	L1183	Nozzle – 3.0 mm Double
RT-PT377-0001CP	o	L1179X	Nozzle – 1.0 mm Double CP
RT-PT377-0002CP	o	L1180X	Nozzle – 1.5 mm Double CP
RT-PT377-0003CP	o	L1181X	Nozzle – 2.0 mm Double CP
RT-PT377-0004CP	o	L1182X	Nozzle – 2.5 mm DoubleCP
RT-PT377-0005CP	o	L1183X	Nozzle – 3.0 mm Double CP



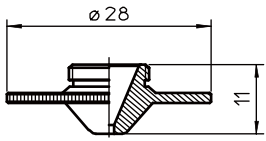
单层喷嘴

JQ Part#	Reference#	ALT Reference#	详细参数
RT-PT377-0010	281599/P0571-291-00010	L465	Nozzle – 1.0 mm
RT-PT377-0012	P0571-292-00012	L466	Nozzle – 1.2 mm
RT-PT377-0015	281570/P0571-293-00015	L467	Nozzle – 1.5 mm
RT-PT377-0018	o	L468	Nozzle – 1.8 mm
RT-PT377-0020	281571/P0571-295-00020	L469	Nozzle – 2.0 mm
RT-PT377-0025	281572/P0571-297-00025	L470	Nozzle – 2.5 mm
RT-PT377-0030	o	L463	Nozzle – 3.0 mm



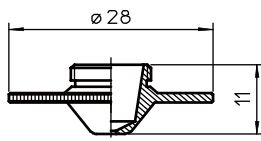
单层喷嘴

JQ Part#	Reference#	ALT Reference#	详细参数
RT-PT348-0001	o	L218	Nozzle – 1.5 mm HD
RT-PT348-0002	o	L219	Nozzle – 2.0 mm HD
RT-PT348-0003	o	L220	Nozzle – 2.5 mm HD
RT-PT348-0001CP	o	L218X	Nozzle – 1.5 mm HD CP
RT-PT348-0002CP	o	L219X	Nozzle – 2.0 mm HD CP
RT-PT348-0003CP	o	L220X	Nozzle – 2.5 mm HD CP



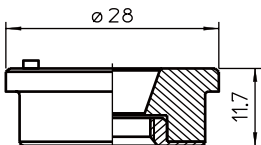
单层喷嘴

JQ Part#	Reference#	ALT Reference#	详细参数
RT-PT348-0015	o	L1062	Nozzle – 1.5 mm HD
RT-PT348-0020	o	L1063	Nozzle – 2.0 mm HD
RT-PT348-0025	o	L1064	Nozzle – 2.5 mm HD
RT-PT348-0030	o	L1065	Nozzle – 3.0 mm HD



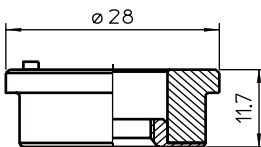
单层喷嘴

JQ Part#	Reference#	ALT Reference#	详细参数
RT-PT348-1340	281340/P0571-281-00010	L410	Nozzle – 1.0 mm
RT-PT348-1341	281341/P0571-282-00012	L411	Nozzle – 1.2 mm
RT-PT348-1342	281342/P0571-283-00015	L412	Nozzle – 1.5 mm
RT-PT348-0018	281342/P0571-284-00018	L413	Nozzle – 1.8 mm
RT-PT348-1343	281343/P0571-285-00020	L414	Nozzle – 2.0 mm
RT-PT348-1344	281344/P0571-286-00025	L415	Nozzle – 2.5 mm



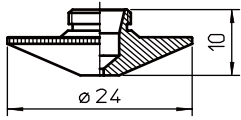
陶瓷体

JQ Part#	Reference#	ALT Reference#	详细参数
RT-PT348-1052	P0571-1051-00001	AL495	Nozzle Holder KT B2 Con
240PTC0001	o	o	o



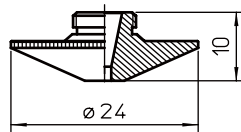
陶瓷体

JQ Part#	Reference#	ALT Reference#	详细参数
RT-PT348-1330	P0571-260-00001/281330	AL131	Nozzle Holder KT B2 Cyl



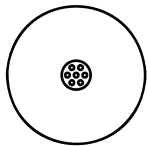
单层喷嘴

JQ Part#	Reference#	ALT Reference#	详细参数
RT-TR301-4561	124561/237499	L18	TrumpfNozzle – 0.8 mm STD
RT-TR301-4562	124562/237498	L19	TrumpfNozzle – 1.0 mm STD
RT-TR301-6809	966809	L361	TrumpfNozzle – 1.2 mm STD
RT-TR301-7500	237500	L26	TrumpfNozzle – 1.5 mm STD
RT-TR301-7503	237503	L24	TrumpfNozzle – 2.0 mm STD
RT-TR301-7504	237504	L25	TrumpfNozzle – 3.0 mm STD
RT-TR301-0561CP	352280	L18X	TrumpfNozzle – 0.8 mm STD CP
RT-TR301-0562CP	352281	L19X	TrumpfNozzle – 1.0 mm STD CP
RT-TR301-0809CP	352282	L361X	TrumpfNozzle – 1.2 mm STD CP
RT-TR301-7500CP	352288	L26X	TrumpfNozzle – 1.5 mm STD CP
RT-TR301-7503CP	o	L24X	TrumpfNozzle – 2.0 mm STD CP
RT-TR301-7504CP	237504	L25X	TrumpfNozzle – 3.0 mm STD CP

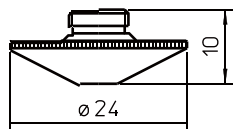


单层喷嘴

JQ Part#	Reference#	ALT Reference#	详细参数
RT-TR301-7497-S	237497-S	L258	TrumpfNozzle – 1.4 mm HD
RT-TR301-7501	237501	L21	TrumpfNozzle – 1.7 mm HD
RT-TR301-3211	237502	L168	TrumpfNozzle – 2.0 mm HD
RT-TR301-6933	126933	L76	TrumpfNozzle – 2.3 mm HD
RT-TR301-0003	o	L185	TrumpfNozzle – 2.5 mm HD
RT-TR301-2742	942742	L360	TrumpfNozzle – 2.7 mm HD
RT-TR301-0004	237504-S	L396	TrumpfNozzle – 3.0 mm HD
RT-TR301-0497CP	237497-S	L258X	TrumpfNozzle – 1.4 mm HD CP
RT-TR301-0501CP	237501	L21X	TrumpfNozzle – 1.7 mm HD CP
RT-TR301-1002CP	237502	L168X	TrumpfNozzle – 2.0 mm HD CP
RT-TR301-0933CP	126933	L76X	TrumpfNozzle – 2.3 mm HD CP
RT-TR301-0003CP	o	L185X	TrumpfNozzle – 2.5 mm HD CP
RT-TR301-0742CP	942742	L360X	TrumpfNozzle – 2.7 mm HD CP
RT-TR301-0004CP	237504-S	L396X	TrumpfNozzle – 3.0 mm HD CP

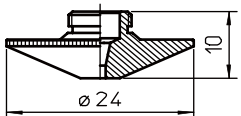


JQ Part#	Reference#	ALT Reference#	详细参数
RT-TR301-7872	237872	L495	TrumpfShower Nozzle – 0.8 mm

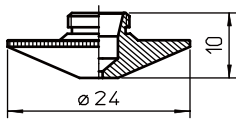


单层花洒式喷嘴

JQ Part#	Reference#	ALT Reference#	详细参数
RT-TR301-7497	237497	L20	TrumpfNozzle – 1.4 mm HD
RT-TR301-7497CP	352283	L20X	TrumpfNozzle – 1.4 mm HD CP

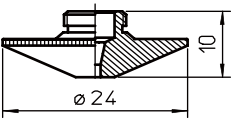


单层喷嘴



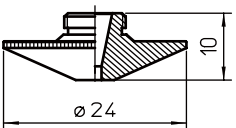
镀铬单层喷嘴

JQ Part#	Reference#	ALT Reference#	详细参数
RT-TR301-4561CP	352280	L18XH	TrumpfChromed Nozzle – 0.8 mm STD CP
RT-TR301-4562CP	352281	L19XH	TrumpfChromed Nozzle – 1.0 mm STD CP
RT-TR301-6809CP	352282	L361XH	TrumpfChromed Nozzle – 1.2 mm STD CP



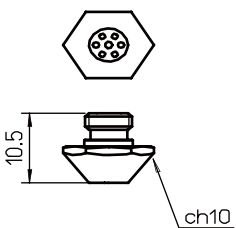
镀铬单层喷嘴

JQ Part#	Reference#	ALT Reference#	详细参数
RT-TR301-7497CP	352283	L20XH	TrumpfChromed Nozzle – 1.4 mm HD CP



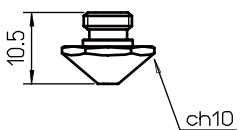
镀铬单层喷嘴

JQ Part#	Reference#	ALT Reference#	详细参数
RT-TR301-0014HCP	o	L258XH	TrumpfChromed Nozzle – 1.4 mm HD Hard CP
RT-TR301-7501CP	352284	L21XH	TrumpfChromed Nozzle – 1.7 mm HD Hard CP
RT-TR301-0002CP	352287	L168XH	TrumpfChromed Nozzle – 2.0 mm HD Hard CP
RT-TR301-6933CP	352285	L76XH	TrumpfChromed Nozzle – 2.3 mm HD Hard CP
RT-TR301-0025HCP	o	L185XH	TrumpfChromed Nozzle – 2.5 mm HD Hard CP
RT-TR301-2742CP	352286	L360XH	TrumpfChromed Nozzle – 2.7 mm HD Hard CP
RT-TR301-0004CP	o	L396XH	TrumpfChromed Nozzle – 3.0 mm HD Hard CP



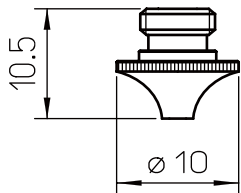
六边形花洒式喷嘴

JQ Part#	Reference#	ALT Reference#	详细参数
RT-TR302-7364	237364	AL131	TrumpfHexagon Heavy-DutyTapered Shower Nozzle –1.0mm



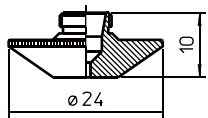
六边形花洒式喷嘴

JQ Part#	Reference#	ALT Reference#	详细参数
RT-TR302-6939	226939	o	TrumpfHexagon Tapered Nozzle – 1.0 mm STD
RT-TR302-6940	226940	o	TrumpfHexagon Tapered Nozzle – 1.4 mm HP
RT-TR302-7144	227144	o	TrumpfHexagon Tapered Nozzle – 1.7 mm HP
RT-TR302-6939CP	o	o	TrumpfHexagon Tapered Nozzle – 1.0 mm STD CP
RT-TR302-6949CP	o	o	TrumpfHexagon Tapered Nozzle – 1.4 mm HP CP
RT-TR302-7144CP	o	o	TrumpfHexagon Tapered Nozzle – 1.7 mm HP CP



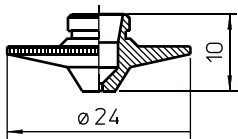
喇叭单层喷嘴

JQ Part#	Reference#	ALT Reference#	详细参数
RT-TR302-0010	135320	L267	TrumpfRound Knurled Flared Nozzle – 1.0 mm STD
RT-TR302-0014	135318	L268	TrumpfRound Knurled Flared Nozzle – 1.4 mm HP
RT-TR302-6157	126157	L269	TrumpfRound Knurled Flared Nozzle – 1.7 mm HP
RT-TR302-0010CP	135320	L267X	TrumpfRound Knurled Flared Nozzle – 1.0 mm STD CP
RT-TR302-0014CP	135318	L268X	TrumpfRound Knurled Flared Nozzle – 1.4 mm HP CP
RT-TR302-6157CP	126157	L269X	TrumpfRound Knurled Flared Nozzle – 1.7 mm HP CP



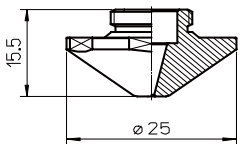
厚板切割单层喷嘴

JQ Part#	Reference#	ALT Reference#	详细参数
RT-TR301-1010	o	L798	TrumpfThick Sheet Nozzle – 1.0 mm
RT-TR301-8893	88893	L13	TrumpfThick Sheet Nozzle – 1.5 mm
RT-TR301-1781	221781	L68	TrumpfThick Sheet Nozzle – 2.0 mm
RT-TR301-4565	235592	L230	TrumpfThick Sheet Nozzle – 3.0 mm



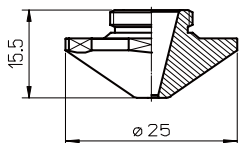
宽边帽式单层喷嘴

JQ Part#	Reference#	ALT Reference#	详细参数
RT-TR301-5780	215780	L2	TrumpfNozzle – 0.8 mm STD
RT-TR301-7658	87658	L11	TrumpfNozzle – 1.0 mm STD
RT-TR301-5780CP	215780	L2X	TrumpfNozzle – 0.8 mm STD CP
RT-TR301-7658CP	87658	L11X	TrumpfNozzle – 1.0 mm STD CP



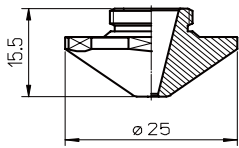
单层喷嘴

JQ Part#	Reference#	ALT Reference#	详细参数
RT-TR407-4858	1324858	L1270	TrumpfNozzle – 0.8 mm
RT-TR407-4860	1324860	L1272	TrumpfNozzle – 1.0 mm
RT-TR407-4861	1324861	L1273	TrumpfNozzle – 1.2 mm
RT-TR407-4863	1324863	L1275	TrumpfNozzle – 1.4 mm
RT-TR407-4864	1324864	L1276	TrumpfNozzle – 1.7 mm
RT-TR407-4858CPH	1324858	L1270XH	TrumpfNozzle – 0.8 mm Hard CP
RT-TR407-4860CPH	1324860	L1272XH	TrumpfNozzle – 1.0 mm Hard CP
RT-TR407-4861CPH	1324861	L1273XH	TrumpfNozzle – 1.2 mm Hard CP
RT-TR407-4863CPH	1324863	L1275XH	TrumpfNozzle – 1.4 mm Hard CP
RT-TR407-4864CPH	1324864	L1276XH	TrumpfNozzle – 1.7 mm Hard CP



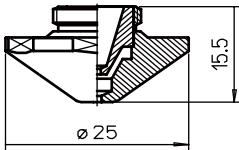
单层喷嘴

JQ Part#	Reference#	ALT Reference#	详细参数
RT-TR301-4858	1324858	L1270	TrumpfNozzle – 0.8 mm
RT-TR301-4860	1324860	L1272	TrumpfNozzle – 1.0 mm
RT-TR301-4861	1324861	L1273	TrumpfNozzle – 1.2 mm
RT-TR301-4863	1324863	L1275	TrumpfNozzle – 1.4 mm
RT-TR301-4864	1324864	L1276	TrumpfNozzle – 1.7 mm
RT-TR301-4858CPH	1324858	L1270XH	TrumpfNozzle – 0.8 mm Hard CP
RT-TR301-4860CPH	1324860	L1272XH	TrumpfNozzle – 1.0 mm Hard CP
RT-TR301-4861CPH	1324861	L1273XH	TrumpfNozzle – 1.2 mm Hard CP
RT-TR301-4863CPH	1324863	L1275XH	TrumpfNozzle – 1.4 mm Hard CP
RT-TR301-4864CPH	1324864	L1276XH	TrumpfNozzle – 1.7 mm Hard CP



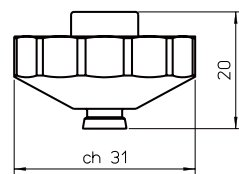
单层喷嘴

JQ Part#	Reference#	ALT Reference#	详细参数
RT-TR301-4865	1324685	L1277	TrumpfNozzle – 2.0 mm
RT-TR301-4866	1324686	L1278	TrumpfNozzle – 2.3 mm
RT-TR301-4867	1324687	L1279	TrumpfNozzle – 2.7 mm
RT-TR301-4865CPH	1324685	L1277XH	TrumpfNozzle – 2.0 mm Hard CP
RT-TR301-4866CPH	1324686	L1278XH	TrumpfNozzle – 2.3 mm Hard CP
RT-TR301-4867CPH	1324687	L1279XH	TrumpfNozzle – 2.7 mm Hard CP



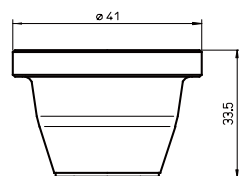
双层喷嘴

JQ Part#	Reference#	ALT Reference#	详细参数
RT-TR426-1308	o	L1308	TrumpfNozzle – 0.8 mm Double
RT-TR426-1309	o	L1309	TrumpfNozzle – 1.0 mm Double
RT-TR426-1310	o	L1310	TrumpfNozzle – 1.2 mm Double
RT-TR426-1311	o	L1311	TrumpfNozzle – 1.4 mm Double
RT-TR426-1312	o	L1312	TrumpfNozzle – 1.7 mm Double
RT-TR426-1313	o	L1313	TrumpfNozzle – 2.0 mm Double
RT-TR426-1314	o	L1314	TrumpfNozzle – 2.3 mm Double
RT-TR426-1315	o	L1315	TrumpfNozzle – 2.7 mm Double
RT-TR426-1308CPH	o	L1308XH	TrumpfNozzle – 0.8 mm Double Hard CP
RT-TR426-1309CPH	o	L1309XH	TrumpfNozzle – 1.0 mm Double Hard CP
RT-TR426-1310CPH	o	L1310XH	TrumpfNozzle – 1.2 mm Double Hard CP
RT-TR426-1311CPH	o	L1311XH	TrumpfNozzle – 1.4 mm Double Hard CP
RT-TR426-1312CPH	o	L1312XH	TrumpfNozzle – 1.7 mm Double Hard CP
RT-TR426-1313CPH	o	L1313XH	TrumpfNozzle – 2.0 mm Double Hard CP
RT-TR426-1314CPH	o	L1314XH	TrumpfNozzle – 2.3 mm Double Hard CP
RT-TR426-1315CPH	o	L1315XH	TrumpfNozzle – 2.7 mm Double Hard CP



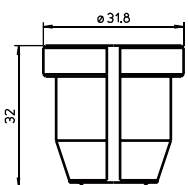
单层喷嘴

JQ Part#	Reference#	ALT Reference#	详细参数
RT-TR407-4018	1774018	L1800	TrumpfNozzle – 1.4 mm
RT-TR407-8745	1838745	L1801	TrumpfNozzle – 1.7 mm
RT-TR407-4020	1774020	L1802	TrumpfNozzle – 2.0 mm
RT-TR407-4092	1774092	L1803	TrumpfNozzle – 2.3 mm



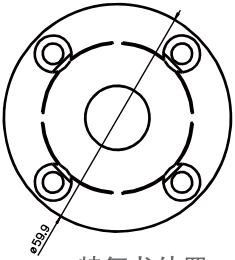
陶瓷体(大)

JQ Part#	Reference#	ALT Reference#	详细参数
RT-TR407-5673	1349171/1755673	AL410	TrumpfCeramic Nozzle Holder (Large)



陶瓷体

RT-TR301-0432	260432/254493	AL108	TrumpfCeramic Nozzle Holder
---------------	---------------	-------	-----------------------------



特氟龙外罩

JQ Part#	Reference#	ALT Reference#	详细参数
RT-TR301-4485	234485	AL70	TrumpfTeflon Cover (White)
o	o	o	TrumpfTeflon Cover (Black)



Empower

上海嘉强自动化技术有限公司

📍 地址：上海 松江区新飞路 1500 弄 72 号 邮编：201611

☎ 咨询热线：400-670-1510

✉ 邮箱：sales@empower.cn

🌐 网址：www.empower.cn